

COOPERATIVE GROUPS

Depth and Complexity

Standard 4.2.3 The Spanish exploration and colonization of California, including the relationship among soldiers, missionaries and Indians

Example Curriculum:

Native Americans and the Missions of California

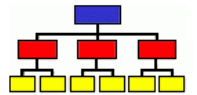
Each group will get a task card to jigsaw and share

Page #'s in text
Identify patterns that brought the Native Americans to the Missions



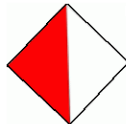
Record your findings, share with class

Page #'s in the text
List the Rules of living at the missions



Record your findings, share with class

Page #'s in the text
Was it right or wrong for the Naïve Americans to be brought into the missions?
Was it ethical?



Record your findings, share with class

Page #'s in the text
Describe the different perspectives of the Native Americans living in the missions and those who were not.



Record your findings, share with class



Big Idea: Power can be used or misused